

DECORATIVE WOOD END PANELS  
INSTALLATION INSTRUCTIONS

Parts List-Single Face Panel

QTY	DESCRIPTION
2	No. 8 X 1 1/2" Lg. Particle Board Screws
2	Countersunk Finishing Washers

Note: Qty doubled for double face end panels.

REQUIRED TOOLS

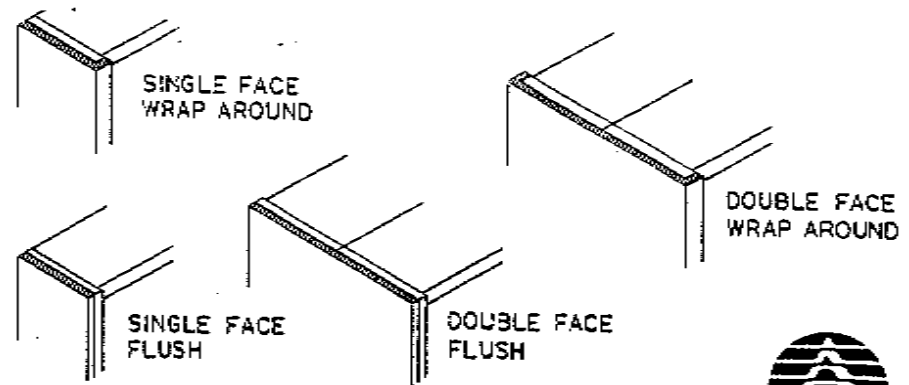
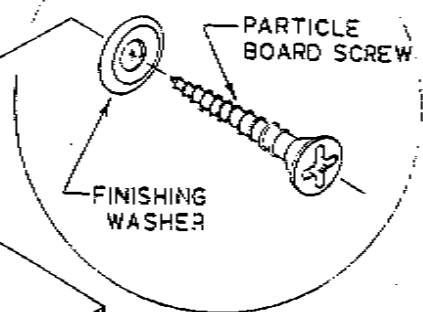
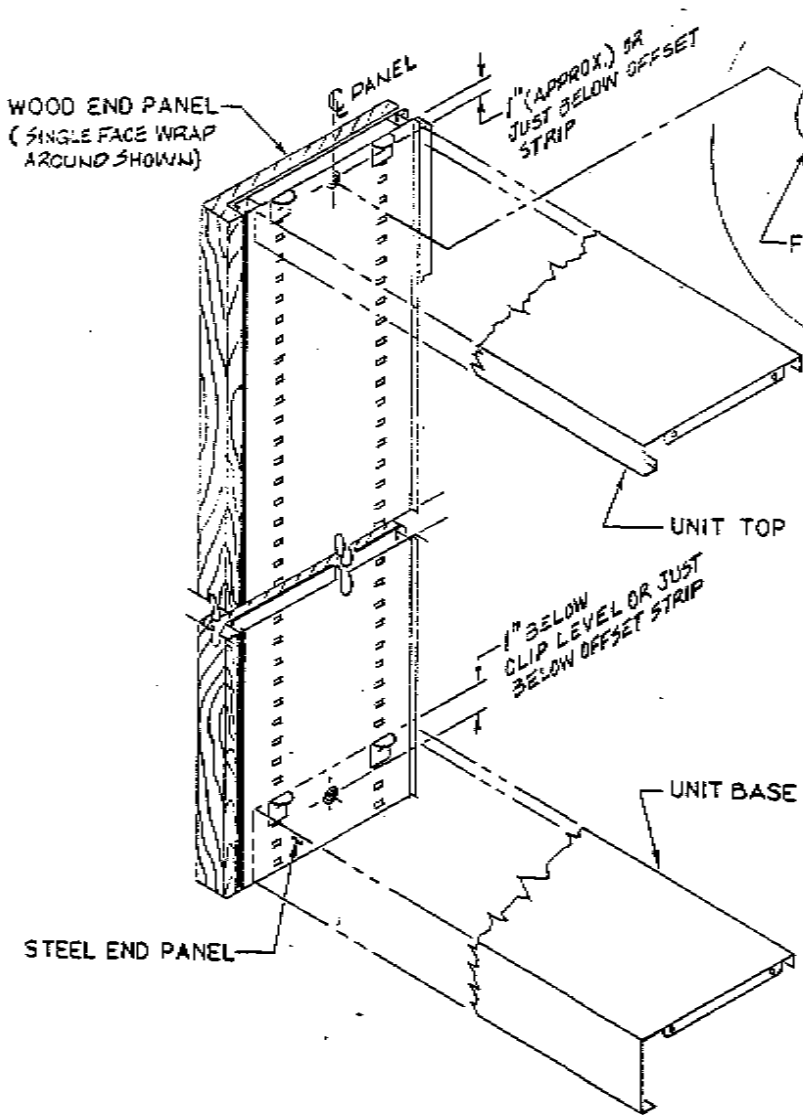
Phillips Screwdriver-No.2 Point, Electric Drill Motor, 3/16" Dia. Drill Bit(Supplied), No. 37 Drill Bit (Supplied)

PREFACE

Refer to plan drawing to locate end units on which the wood end panels are to be installed. To avoid damage, install the wood end panels last - at the end of the installation.

INSTRUCTIONS:

- 1) Remove the unit base from the end unit. Without the wood panel in place and from the inside of the unit, drill two (2) 3/16" dia. holes thru each steel end panel. Locate the hole in accordance with the detail at left.
- 2) Position the wood end panel against the unit and align with the steel panel. Fasten in place with screws and finishing washers provided. Should the installer wish to drill a pilot hole in wood panel, a No. 37 bit is included with the hardware. However, extreme caution must be used not to drill completely thru the wood panel. IMPORTANT-Only tighten screws enough to hold the wood panel snugly against the steel end panel. If an electric screw gun is used, care must be taken not to crush the steel panel by overtightening the screws.
- 3) Replace the base in unit.



INSTALLATION DETAIL - WOOD PANEL

WOOD END PANEL ARRANGEMENTS